

# **Ideco Gateway 2.5**

# **Getting Started**



**[www.IdecoGateway.com](http://www.IdecoGateway.com)**

© 2003 - 2008 Ideco Software  
Web: [www.idecogateway.com](http://www.idecogateway.com)  
E-mail: [info@idecogateway.com](mailto:info@idecogateway.com)

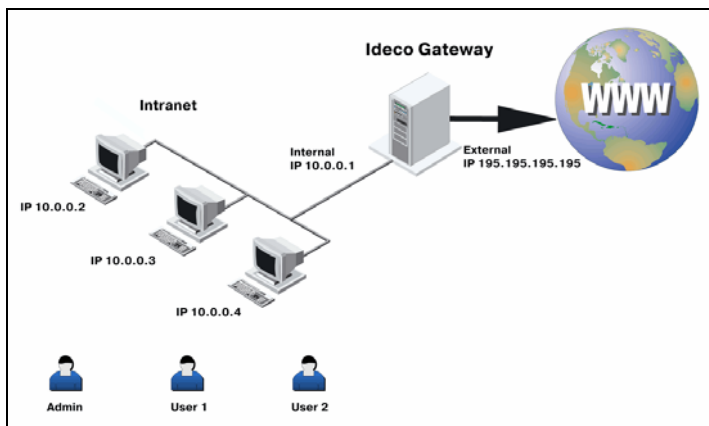
March 2008

# 1 Introduction

**Ideco Gateway** provides every employee of your organization with personal access to the Internet. Ideco Gateway is installed on the borderline separating your intranet and the Internet. It allows control over access to the Internet, traffic and visits accounting, planning and restricting costs.

**Ideco Gateway** protects users' computers from outside threats, connects remote users and departments over secure channels.

**Ideco Gateway** is a self-contained product based on the Linux kernel and including production-ready preconfigured components. The system is easy to install and control using a simple graphical interface.



# 2 Installation

Ideco Gateway is installed from a CD-ROM onto a dedicated computer. The operating system and all the required software components will be installed automatically.

---

**Important!** All data will be erased during the installation. Ideco Gateway does not support installing over the existing OS or side-by-side installations.

---

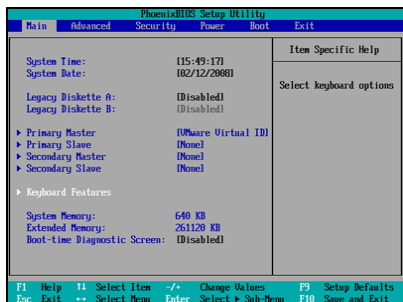
## System requirements:

- Pentium/Celeron/AMD CPU 800+ Mhz
  - 256+ Mb RAM
  - 10+ Gb HDD, IDE UDMA
  - Two PCI network interfaces. Recommended cards: 3Com905, Realtek 8139C+, Intel E100
  - Turn on IDE LEGACY mode in BIOS for SATA drives
- Open the BIOS setup utility, set correct time and date, and turn on booting up from the CD-ROM drive.

---

**Note:** You can usually enter the BIOS setup utility by pressing Del or F2 during the computer boot-up.

---



Save BIOS settings and reboot the computer.

- Insert the Ideco Gateway compact disk into the CD-ROM drive.

---

**Hint:** We urge you to type "**memtest**" at the prompt after loading to run the memory test if it hasn't been run before on this computer. The memory test will take approximately 30 minutes.

---

```
.....
Ideco Gateway 2.5.6 installation
.....

It is recommended to test RAM before installing this software.

- Type "memtest" to test RAM before installing (recommended)
- Type "setup" or press Enter to install.
  Installation starts automatically in 128 sec.

Press F1 for additional information.

Please type "setup" or "memtest" and press Enter
boot: _
```

To install Ideco Gateway, type **"setup"** and/or press Enter. When the load process completes, follow the instructions of the installation wizard.

---

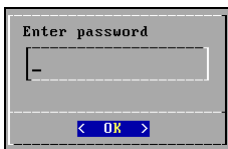
**Note:** If you are experiencing hardware compatibility problems, type one of the following: **"setupnoapic"**, **"setupnosmp"**, **"setupsafe"**, **"setupnoub"**

---

- ▶ After the installation has completed, eject the distribution compact disk and turn off booting from CD-ROM in BIOS.

# 3 Configuration

- ▶ If you have used the installation wizard, jump to **step 4 on page 7**.
- ▶ After rebooting the server, you will see the password prompt shown below. To access the server configuration utility, enter "**servicemode**" as the password.

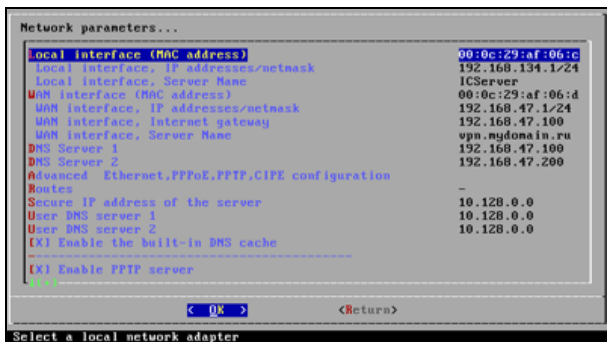


---

**Note:** Because the system hasn't yet been configured, it will automatically go into SAFEMODE. The mode displays in the status bar at the top.

---

- ▶ Select **Configure Server > Configure Network...**



- ▶ **Local interface.** Press **Enter** and select the network interface connected to the local network. MAC address of the interface will be displayed. If you are not certain how the network interfaces correspond to networks, select any interface. You can swap the interfaces later on.
- ▶ **Local interface, IP address.** Specify the server's IP address and netmask on the local network. This is the address the users will connect to. For instance, if your local network is 192.168.1.x, specify 192.168.1.254/255.255.255.0. The default value is 10.0.0.1/255.255.255.0.
- ▶ **Local interface, routes.** Not required for small networks. If you have a multisegment network, specify routes for the server. For instance, if the server is in the segment 10.33.2.x and the address of the router is 10.33.2.1, specify 10.0.0.0/255.128.0.0 10.33.2.1.

- ▶ **Local interface, server name.** Specify the name of the server on your local network; e.g. "vpn.myorg". This setting is mandatory.
- ▶ **WAN interface.** Press **Enter** and select the network interface connected to your ISP's network.
- ▶ **WAN interface, IP address.** Specify the real IP address and netmask that you have obtained from your ISP. This is the address the users will manifest while working on the Internet.
- ▶ **WAN interface, Internet gateway.** Specify the gateway that you have obtained from your ISP.
- ▶ **WAN interface, server name.** Be sure to specify the external domain name of your server. If you do not have a registered name, request a third-level domain name from your ISP. Failing that, specify any bogus non-existent name, such as "vpn.mydomain".
- ▶ **Secure IP address.** The server's address for secure connections, defaults to 10.128.0.0. Changing this address is not recommended. This is the address used for connecting with Ideco Gateway Manager and also for accessing the restricted area of the Web interface.
- ▶ **DNS server 1, DNS server 2.** Specify ISP's primary and secondary domain name servers.
- ▶ **DNS server 1 for users.** Specify the first DNS address to be served to users. This defaults to 10.128.0.0 (changing is not recommended) and points to the built-in caching DNS server.
- ▶ **DNS server 2 for users.** Specify the second DNS address to be served to users. This can be a local name server's address. Defaults to 10.128.0.0. Changing this value is not recommended.
- ▶ After specifying all the parameters, click **Return** and save the configuration. Reboot the server using the **Restart Server** menu. You can also use **soft restart** to verify network parameters. Be sure to perform a full restart after the parameters have been verified. After the soft restart has been completed, press **Enter**. After rebooting, the server is ready for work.

If the status bar does not report any errors after rebooting, this signifies that the server has been configured correctly and you can perform more subtle tuning as necessary.

---

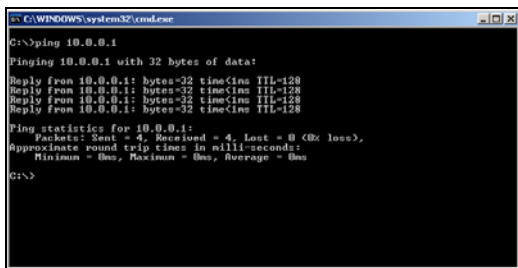
**Note:** If you are connected to the ISP over VPN or PPPoE, you should configure these connections in the menu that reads "Advanced Ethernet, PPPoE, PPTP, CIPE configuration".

---

# 4 Connecting

To connect to the Internet through Ideco Gateway:

- ▶ Select a computer on your local network. Set the computer's IP address to 10.0.0.2, subnet mask to 255.255.255.0.
- ▶ Make sure the network hardware is functioning properly by checking the link indicator (look for the "Link" light on the computer's and the server's network interface cards.)
- ▶ To verify that a network route exists between the computer and the server, follow these steps.
  - Open a command line window by selecting **Start > Run**. Type **command** under Windows 9x or **cmd** under Windows 2000/XP. Click OK.
  - In the window that appears, type "**ping 10.0.0.1**" and press **Enter**. If a route to the server is available, you will see a result similar to what the following image shows.



```
C:\WINDOWS\system32\cmd.exe
C:\>ping 10.0.0.1
Pinging 10.0.0.1 with 32 bytes of data:
Reply from 10.0.0.1: bytes=32 time<ms TTL=128
Reply from 10.0.0.1: bytes=32 time<ms TTL=128
Reply from 10.0.0.1: bytes=32 time<ms TTL=128
Reply from 10.0.0.1: bytes=32 time<ms TTL=128

Ping statistics for 10.0.0.1:
    Packets: Sent = 4, Received = 4, Lost = 0 (0% loss),
    Approximate round trip times in milli-seconds:
        Minimum = 0ms, Maximum = 0ms, Average = 0ms
C:\>
```

---

**Important:** If ping fails, either swap local and external network interfaces in the server configuration or swap the network cables connected to the interfaces. Repeat the verification process. If you don't get an answer from the server, this indicates that either the local network hardware or a network interface card is failing, or you are using low quality cable.

---

- ▶ Temporarily shut down the firewall on your computer and turn off the use of any proxy servers in the browser.

---

**Note:** Alternatively, you can simply allow ports 1723 and 3050 and the GRE protocol for address 10.0.0.1 in the firewall.

---

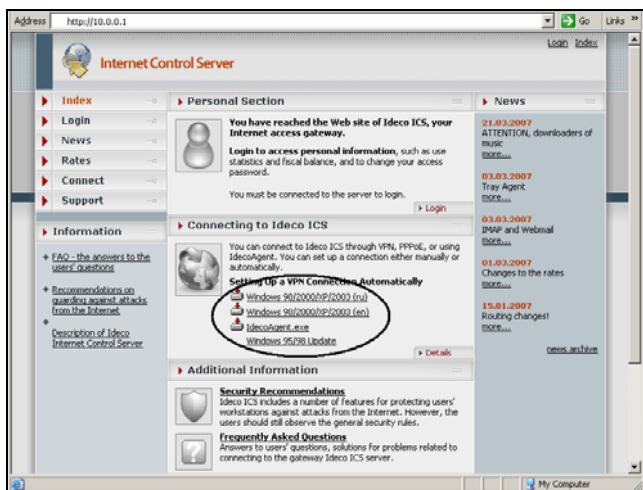
- ▶ If you have selected IP-based authentication for the administrator in the installation wizard, go to **step 5 on page 9**.

- ▶ Visit the site at **http://10.0.0.1**. From the site, download the executable file that will automatically configure VPN connections on your operating system and click **Open** in the confirmation request dialog box.

---

**Note:** VPN is not the only way to authenticate users supported in Ideco Gateway. VPN, however, is the recommended way and it will be used by default. From here on, we describe VPN connections.

---



---

**Note:** You can also configure a VPN connection manually. The detailed instructions for configuring VPN connections on various operating systems are available in the Web interface, under section **Connect**.

---

- ▶ Establish a VPN connection using "**Administrator**" as the login name and "**servicemode**" as the password.

---

**Important:** Login and password are case-sensitive.

---

- ▶ After you have established the connection, verify that the system works by issuing the following commands:

```
ping 10.128.0.0
```

```
ping <IP address assigned to you by the ISP>
```

```
ping <ISP's gateway>
```

If you have followed the instructions to the letter, at this point, both Ideco Gateway and your computer are configured correctly. You can now access the Internet.

## 8 • Ideco Gateway. Getting Started.

# 5 Administering

To administer the server, install Ideco Gateway Manager (administrative interface) on a computer within the local network. To do so:

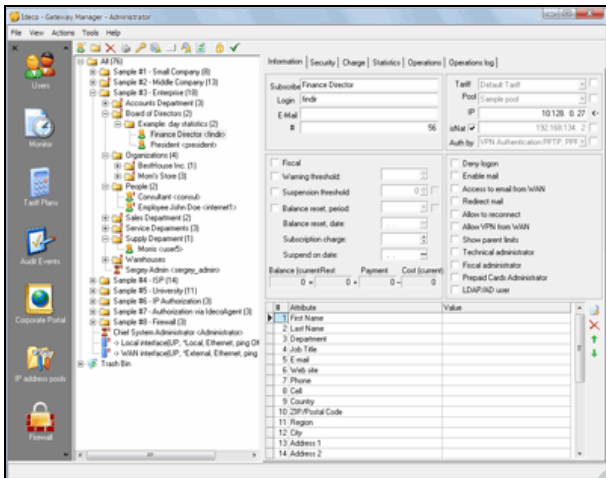
- ▶ Insert the compact disk into the CD-ROM drive. In a few seconds, a Web page will open where you must click the link that reads **Ideco Gateway manager**. Click **Open** in the confirmation request dialog box. If CD-ROM autorun has been turned off, visit the directory **GatewayManager** on the compact disk and execute **setup.exe**.

---

**Note:** You can also install Ideco Gateway Manager by clicking the link "Download Gateway Manager" under the tree of users.

---

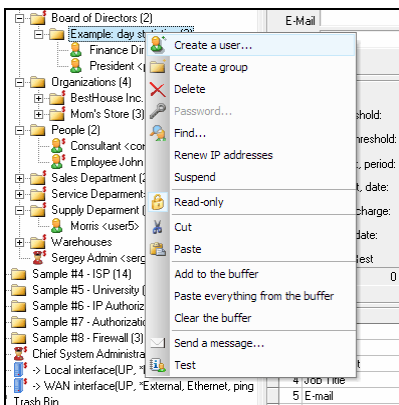
- ▶ If you have chosen to connect over VPN as the administrator, establish a VPN connection as described in the previous section, if you have not done so already.
- ▶ Run the application by opening the Gateway **Manager** shortcut on the Desktop. In the connection dialog box that appears, type "**Administrator**" as the login name and "**servicemode**" as the password. If you have selected authentication over VPN in the installation wizard, specify 10.128.0.0 as the server address. If you have selected authentication by IP, specify the local address of the server: 10.0.0.1
- ▶ Take a look at how the interface is organized; explore the examples of various ways to group users.




# 6 Getting Started

Select a grouping option that suits your organization most (see examples 1 through 4).

- ▶ Create a new user in the selected group. To do so:



- Select  **Create a user...**
  - In the dialog box that appears, type "**test**" as the login name, "**test user**" as the user name, "**123**" as the password, "**123**" as the password confirmation.
  - Select authentication method: by IP, over VPN/PPPoE, or through IdecoAgent
- ▶ Select a computer within the local network and configure it as described in section 3, using **10.0.0.3** as the address, 255.255.255.0 as the netmask.
  - ▶ To authenticate over VPN, establish a VPN connection using "**test**" as the login name, "**123**" as the password.  
To authenticate by IP, specify the user computer's address in the IP field: 10.0.0.3.  
To authenticate through IdecoAgent, download IdecoAgent.exe from <http://10.0.0.1>, save it to disk, and then execute. Specify "**test**" as the login name, "**123**" as the password.
  - ▶ After you establish the connection, the computer should have access to the Internet.
  - ▶ Under section **Monitor**, take a look at the list of connected users.



## 8 Next Up

To finalize the configuration of Ideco Gateway, it is recommended to perform these steps:

- ▶ Create a group in the root folder and name it after your organization. As a rule, you also make the group **fiscal**. (Larger organizations and ISPs usually make the nested groups fiscal.)
- ▶ Create a pool of personal addresses to be assigned to users, such as 10.128.0.1-10.200.0.0.
- ▶ Create a subscription similar to your ISP's subscription, with varying costs for different subnets. Set zero cost for the local network and make it the first network on the list.
- ▶ Assign the created pool of addresses and the subscription to the root group. These will be used by default.
- ▶ In the main group, create subgroups reflecting the structure of your organization. Add users into the subgroups. Set Internet use restrictions for users and/or groups. (In a large organization, you can appoint an administrator for a group. This person will be responsible for creating users and setting restrictions.)
- ▶ Move the examples into the Trash Bin or set the flag **No access** on them.
- ▶ Specify your company's name and the support service phone numbers under **Site editor**.
- ▶ Create additional rules under Firewall.
- ▶ Set additional parameters in section **Configure Server** of the local console. You can specify the administrator's email address; turn on the built-in email handling; turn on the external Web site; control remote access and other options.
- ▶ On user computers, enable the **Messenger service** to ensure delivery of balance notifications.

---

**Important:** Be sure to change the password for the local console and for the chief administrator.

---

If you have followed all the instructions, your Ideco Gateway server is now ready for work.

# **9** **Contacts**

Contact us with any questions regarding the installation, adoption, and use of Ideco Gateway.

## **Ideco Software**

**Voice/Fax: +1.800.315.7502**

**Web: [www.IdecoGateway.com](http://www.IdecoGateway.com)**

General information: [info@idecogateway.com](mailto:info@idecogateway.com)

Questions related to licensing: [sales@idecogateway.com](mailto:sales@idecogateway.com)

Technical questions: [support@idecogateway.com](mailto:support@idecogateway.com)